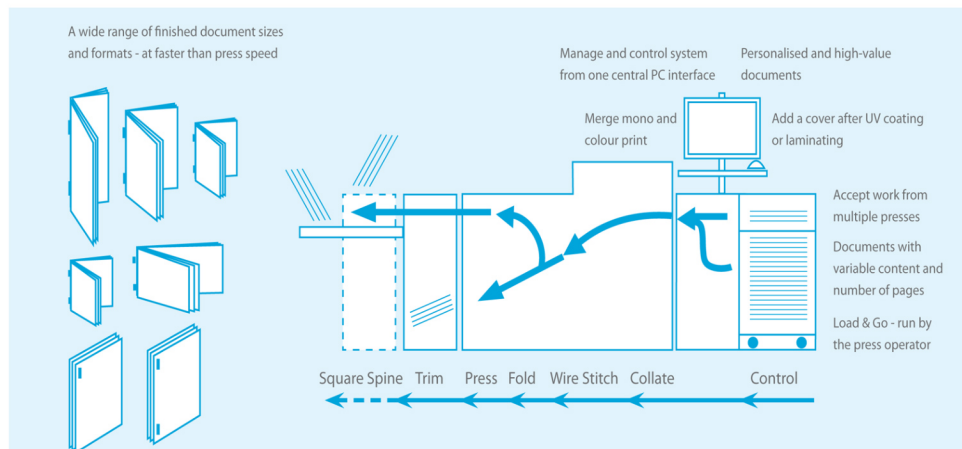


Features

- Mid-volume booklet maker designed for digital print
- Deluxe M2000 stitch heads provide low running costs
- Digital sheet feeder operates with pre-collated sets
- Ultrasonic double sheet detection as standard
- Cover feeder allows for lamination or foil effects
- Stitch & fold up to 20 sheets or a 80 page booklet
- Produce A4 to A6 finish size booklets as standard
- Fully automated setup via PC Controller + OMR
- Produce up to 3,000 booklets per hour
- Integrated book press ensures highest quality books
- Variable fold roller pressure ensures smooth processing
- Integrated stacker neatly shingles the finished booklets for collection
- Optional ASM350 Squareback Module for true layflat booklets
- Ideal solution for digital printers, councils, universities & colleges



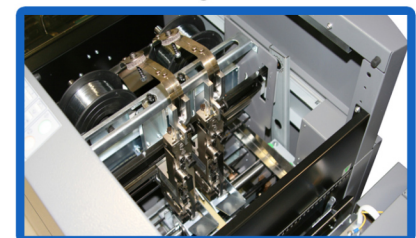
Functions



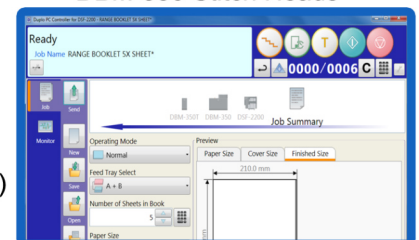
DSF-2200 Feeding System



Trail Edge Air Kit



DBM-350 Stitch Heads



PC Controller - Job Creator

Specifications

- Infeed Size:** (Minimum W x L) 148 (105 with small boklet kit) x 200mm
(Maximum W x L) 320 x 460mm
- Infeed Type:** Belt suction, top feed, air separation with fans & pumps
- Paper Types:** Fine quality, art coated 64 to 127gsm, Art Covers to 300gsm
- Stitch Capacity:** Fine Quality 20 sheets, Art or Coated 20 sheets
- Max Output Speed:** 3,000 sets per hour
- Stitch Head Type:** Deluxe M2000 - Optional upgrade to Hohner
- Stitch Capacity:** Dependent on book thickness, up to 25,000 stitches
- Detect Functions:** Paper jam, staple near empty, cover/lid, motor overload
- Fold Rollers:** Chamfered steel with 7 point positioning + book press
- Noise Emission:** 75 to 92dB dependant on application
- Operation Display:** Touch screen PC Controller with Duplo Job Creator Software
- Skew:** 10 Stage skew adjust via easy access lever on lower exit
- Accuracy:** +/- 0.2mm dependant on application
- Power:** 220V, 50/60Hz - 130 Watt, 1.2 amp (Standard 13amp UK Plug)
- Weight:** 450 Kgs
- Dimensions:** (W x D x H) 3,100 x 750 x 1,030mm (Fully assembled)