

QTOPIC-380 SERIES

POD SEMI-AUTOMATIC THERMAL LAMINATORS

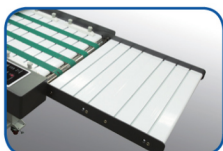
- Perfect lamination for a wide range:
 - Polynex (BOPP base) Film
 - Nylonex (Nylon base) Film
 - Perfex (PET base) Film
- Space-effective compact design for offices, copy shops, and photo shops.
- Automatic paper feeding gap control system and automatic burst cutting system.
- Film tension control device and decurling device are equipped.
- Capacitive touch screen
- *Sleeking™* solution and Micronex lamination with re-winder unit.
 - Gloss, Matt, Holographic, Metallic *Sleeking™* film
 - Micronex (overlay coating) laminating film
- Air compressor included.

Using household power supply (220 ~ 240V)



FEATURES

- Exchangeable / Commonized PCB.
- Semi-automatic feeding paper gap control.
- Air compressor (with light weight and lower noise) is placed inside the body.
- Strengthened laminating pressure for more stepped-up bonding power for effective perfect quality of output.
- Ergonomic touch screen for enhancing operator-centric convenient control and quality productivity.
- Cantilever type film shaft for easy film loading.



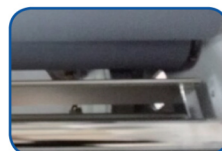
ATTACHABLE EXTENSION FEEDING TABLE (OPTIONAL)



TOP FILM PERFORATOR (OPTIONAL)



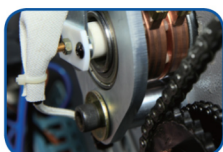
CAPACITIVE TOUCH SCREEN



DECURLING DEVICE



AUTOMATIC FEEDING GAP CONTROL DEVICE



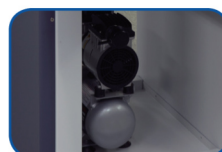
THERMO-COUPLE INSERTED FOR TEMP. SENSING



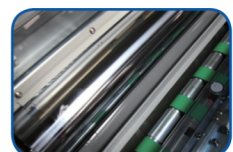
IN-LINE PERFORATOR



CANTILEVER TYPE FILM SHAFT



AIR COMPRESSOR

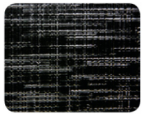


HIGH GLOSSY CHROME ROLLER

APPLICATIONS

- Posters
- Pop-up Signs
- Menus
- Book covers
- Photograph Albums
- Name cards
- Gift certificates
- Greetings Cards
- Yearbooks
- Calendars
- Labels (Micronex Lamination)
- Magazines and inner pages
- Packaging
- Leaflets
- Business Brochures
- Business Cards
- Wedding Invites
- Party Invites

BASIC PATTERNS OF EMBOSING ROLLER (OPTIONAL)



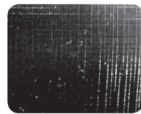
FINE
TEXTURE



LEATHER
TEXTURE



SPARKLE
TEXTURE



SILKY
TEXTURE



LINEN
TEXTURE

Model Name	QTOPIC-380	QTOPIC-380 DUAL	QTOPIC-380 DUPLEX
Dimensions (WxLxH)	720 x 1700 x 1350mm	720 x 1800 x 1350mm	720 x 1700 x 1350mm
Laminating Speed	1.5m/min ~ 10m/min	1.5m/min ~ 10m/min	1.5m/min ~ 10m/min
Paper Size (WxL)	Max: 380 x 500mm (optional 1200mm) Min: 180 x 210mm	Max: 380 x 500mm (optional 1200mm) Min: 180 x 210mm	Max: 380 x 500mm (optional 1200mm) Min: 180 x 210mm
Laminating Films	<ul style="list-style-type: none"> • Single Side <ul style="list-style-type: none"> - Polynex (20 ~ 43mic) - Perfex (25mic) - Nylonex (27 ~ 44mic) • Micronex (6 ~ 10mic) <ul style="list-style-type: none"> - Gloss/Matt/Holographic 	<ul style="list-style-type: none"> • Single Side <ul style="list-style-type: none"> - Polynex (20 ~ 43mic) - Perfex (25mic) - Nylonex (27 ~ 44mic) • Micronex (6 ~ 10mic) <ul style="list-style-type: none"> - Gloss/Matt/Holographic 	<ul style="list-style-type: none"> • Single Side <ul style="list-style-type: none"> - Polynex (20 ~ 43mic) - Perfex (25mic) - Nylonex (27 ~ 44mic) • Micronex (6 ~ 10mic) <ul style="list-style-type: none"> - Gloss/Matt/Holographic
<i>Sleeking™</i>	Gloss / Matt / Holographic / Metallic	Gloss / Matt / Holographic / Metallic	Gloss / Matt / Holographic / Metallic
Substrate Thickness	120 ~ 350g/m ²	120 ~ 350g/m ²	120 ~ 350g/m ²
Front roller diameter (Top)	high gloss chrome Ø 100	high gloss chrome Ø 100	high gloss chrome Ø 100
Front roller diameter (Bottom)	silicon Ø 80	silicon Ø 80	silicon Ø 80
Rear roller diameter	silicon Ø 55	silicon Ø 55	silicon Ø 55
Power Requirements	AC 220 ~ 240V, 50/60Hz, 12A	AC 220 ~ 240V, 50/60Hz, 12A	AC 220 ~ 240V, 50/60Hz, 12A
Power Consumption	2.8kw	2.8kw	2.8kw
Warm-up Time	5 minutes	5 minutes	5 minutes
Heating System	Infrared Heater	Infrared Heater	Infrared Heater
Laminating Temperature	Max. 150°C	Max. 150°C	Max. 150°C
Temperature Control	Capacitive Touch Screen	Capacitive Touch Screen	Capacitive Touch Screen
Speed Control	Capacitive Touch Screen	Capacitive Touch Screen	Capacitive Touch Screen
Display System	LCD Panel	LCD Panel	LCD Panel
Pressure Control	Pneumatic cylinder	Pneumatic cylinder	Pneumatic cylinder
Film Core Size	77mm (3") / Dual - 58mm, 50mm	77mm (3") / Dual - 58mm, 50mm	77mm (3") / Dual - 58mm, 50mm
Air Compressor	1 HP, 89L / min	1 HP, 89L / min	1 HP, 89L / min
Temp. Sensing Method	Thermo-couple inserted in the roller shell	Thermo-couple inserted in the roller shell	Thermo-couple inserted in the roller shell