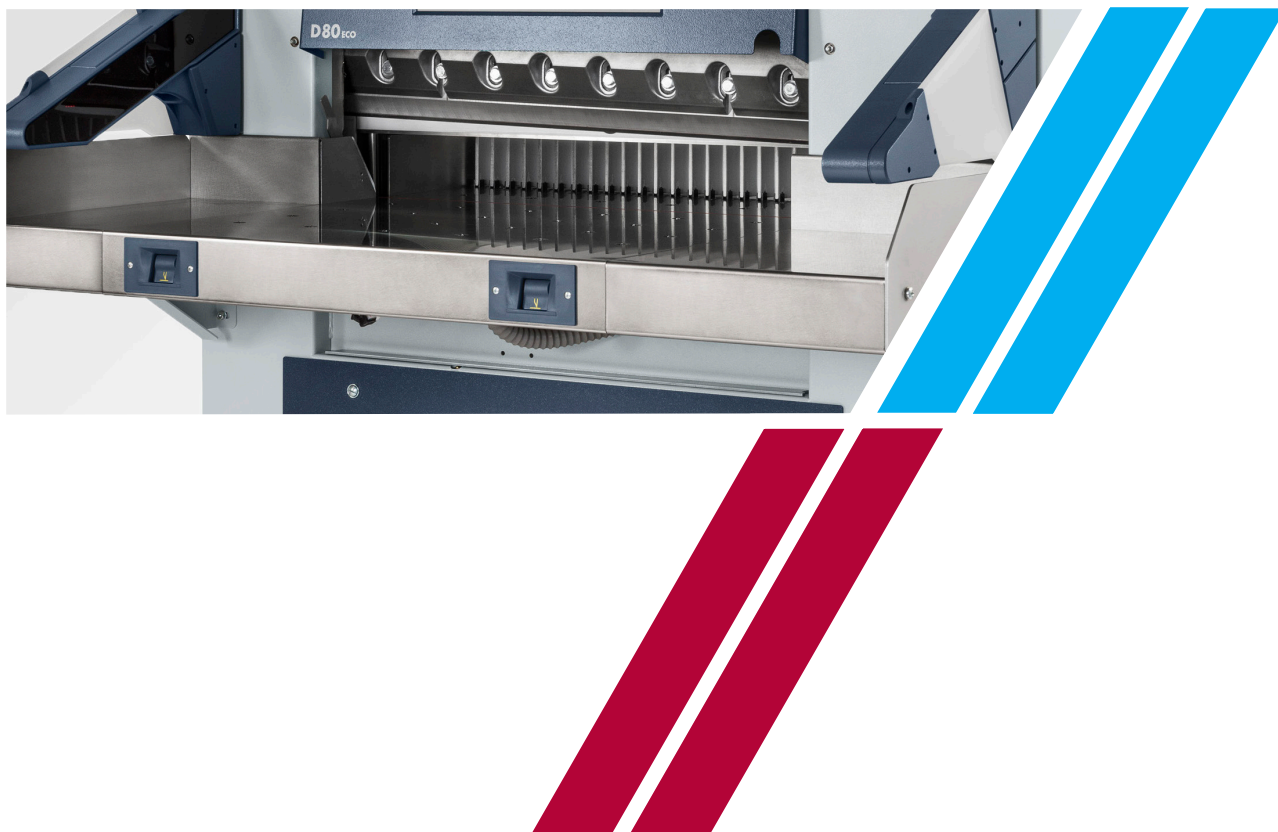


# MOHR

 CUTTING ON DEMAND



**TFP**

The Finishing Point (TFP) Ltd

Mohr Guillotines

The Finishing Point | [www.tfp-uk.com](http://www.tfp-uk.com)

# Mohr Guillotines

---

## Mohr Guillotines

Mohr Guillotines are durable, programmable cutting machines with hydraulic drive. Quick-print shops, copy shops, commercial print shops, in-house printers value not only the uncomplicated operation, but also the long service life of the cutting machine. The unique cutting precision is obtained by the sturdy construction and the direct measurement.

The precise and gentle bevel swing cut is carried out hydraulically on all of our models. This allows adjusting the dwell time of the knife in the BDC to the respective material. The corrosion free table surface provides very easy gliding which makes the material easy to handle. On the Mohr Cutter 80, this effect is even supported by air jets, however on the 56 and 66 models the air jets are optional. The clamping pressure can be continuously adjusted within a large range by means of a turning knob with scale to suit any material to be cut. A variable pre-clamping time control optimizes cutting quality when dealing with different materials. Luminous LEDs indicate the cutting line to the operator.

## The highlights

- Wide range of programming options
- Easy knife changing with automatic shutoff in bottom dead centre and fine adjustment from the front
- W A machine frame with optimized stability takes the forces produced during the cutting process in the best possible way and guarantees maximum cutting precision.
- Minimum expenditure of maintenance thanks to innovative materials
- Digital workflow integration (only PLUS model)



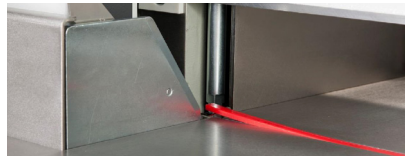
# Mohr Guillotines

## Mohr Guillotines provide the latest technology

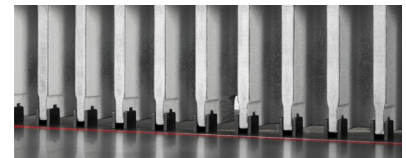
The major technical features of the Mohr Guillotine are:



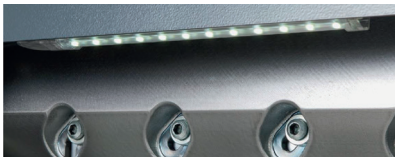
Linear ball bearing: maintenance-free and extremely precise.



A cutting stick ejector eases and abbreviates the knife change.



Backgauge rakes with spring loaded plastic gliders treat the table surface with care despite permanent contact.



LED cutting line indicator ensure optimum illumination, even when lighting is poor.



Knife depth can be conveniently adjusted from the front.



LED cutting line indicator ensure optimum illumination, even when lighting is poor.

## Optional barcode reader (Plus models only)

Once the **barcode** has been read the allocated **cutting program** is **automatically** started. There is no tedious searching for the **right cutting program**, consequently there will be **no** operating errors.



# Mohr Guillotines

## Mohr ECO

### Key Features

- Low-profile keyboard with easy-to-understand symbols
- Menu-driven knife change
- Programming during cutting
- Block programming available
- Format tables
- 198 program memory locations
- Program information with plain text
- Cutting cycle shown with symbols
- Programmable jogging mark
- Clamping time before cutting
- Programmable ejector
- Protect program
- Lubrication interval signal

The machine is operated via an ergonomically arranged control panel with 5.5" monochrome display and extra low-profile keyboard. Repeat sequences can be saved in one of 198 available memory positions can even be adapted at any time. The cutting programs are either generated manually or menu-driven via the intuitive block programming method.

## Mohr PLUS

### Additional functions as compared with ECO:

- Option of digital workflow integration
- Process visualization for a graphic indication of material handling
- Production report for acquiring the machine performance data
- 1,998 Program memory positions
- Copy program

### For digital workflow integration, the following options are available:

- Compucut® takes the cutting data supplied as ppf or jdf files direct from the prepress stage. Compucut® generates the cutting program automatically.
- A barcode reader enables the machine to start the cutting program automatically. This allows setup times to be reduced.

The machine is operated via an ergonomically arranged 18.5" touch-sensitive display. Repeat sequences can be saved and adapted at any time. To do so, the system has 1,998 memory positions available.

Process visualization gives the operator a graphic indication of the material handling. This reduces the likelihood of operating errors.



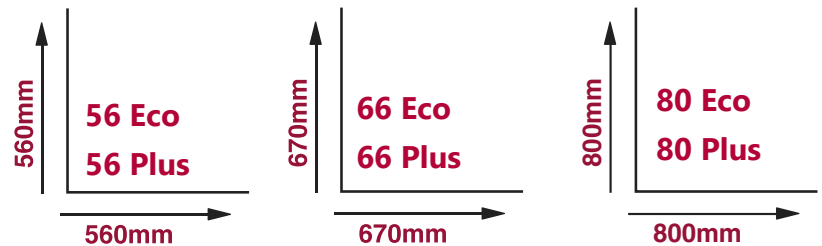
# Mohr Guillotines

## Measure up

	<b>56</b>	<b>66</b>	<b>80</b>
Cutting width:	560mm	670mm	800mm
Feed Depth:	560mm	670mm	800mm
Feeding height, max. (without false clamp plate)	80mm	80mm	100mm
Table depth:	560mm	670mm	800mm
Length of front table	670mm	670mm	670mm
Table height	900mm	900mm	900mm
knife speed (Cycles/min)	20	20	20
Blade drive:	Hydraulic	Hydraulic	Hydraulic
Blade thickness:	9.7mm	9.7mm	9.7mm
Clamping system:	Automatic clamp	Automatic clamp	Automatic clamp
Backgauge:	Electric	Electric	Electric
Narrow cut:	15mm	15mm	15mm
Clamping pressure max	1200 daN	1500 daN	2700 daN
Clamping pressure min	200 daN	200 daN	180 daN

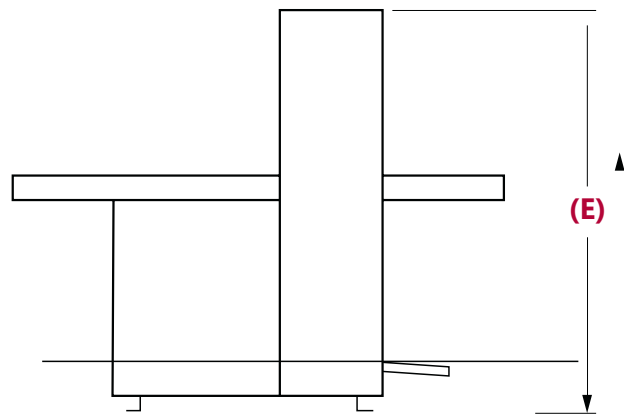
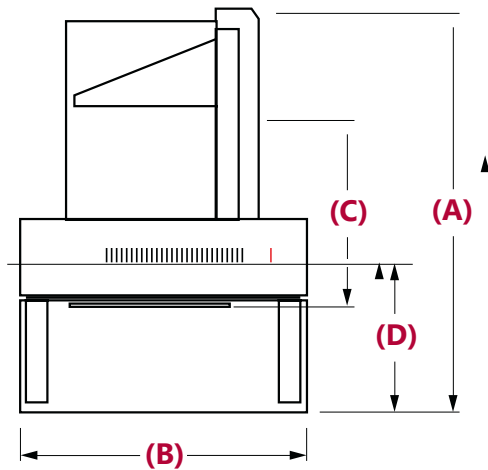
## Feeding height, max. (without false clamp plate)

- Cutting sticks (Set of 10 items)
- HSS-knives
- Carbide-tipped knives
- Knocking block
- Protektopur



# Technical Specifications

	56	66	80
Width (B)	1150mm	1250mm	1430mm
Depth (A)	1670mm	1825mm	1970mm
Height (E)	1500mm	1500mm	1500mm
Net weight:	575kg	620kg	900kg
Static floor load:	330 daN/m <sup>2</sup>	330 daN/m <sup>2</sup>	384 daN/m <sup>2</sup>
Dynamic surcharge:	20%	20%	20%
Power draw (KVA):	2,2	2,4	4
Thermal output:	7135	7784	12973
Feed depth (C)	560mm	670mm	800mm
Length of front table (D)	670mm	670mm	670mm



The Finishing Point | [www.tfp-uk.com](http://www.tfp-uk.com)

☎ 01925 418222

**TFP**  
The Finishing Point (TFP) Ltd

\*Disclaimer As part of our continued product improvement plan, specifications and information published here are subject to change without notice. All specifications are dependent on application, type of stock, temperature, RH and print engine used. Specifications quoted were measured on uncoated and unprinted stock. E & OE.