

**THERMAL BINDING ACCELERATED BY DROP&GO TECHNOLOGY**

# Accel cube

## TWICE THE EFFICIENCY

You'll get faster, stronger binding in a flash with our next generation of high-performance, off-line, automated, binding machines. The new Accel series has cut the binding time to your finished documents in half.

- Greater strength and quality for your documents

- More efficient than ever



Bindomatic has enhanced our Drop&Go Technology, making the Accel Cube an amazing two times faster than the previous generation. Its efficiency is rivaled only by the Bindomatic® Ultra. Documents move through the machine twice as fast, dramatically boosting efficiency. The Cube features additional upgrades including increased quality and strength of the bound documents as well as improved appearance of the machine.

Successor to the 7000, the Cube is the ideal binding solution for office/corporate walk-up print stations, as well as volume demanding CRD or commercial print environments. It delivers professionally-bound documents, without the need of trained operators.

**The Bindomatic® Accel Cube is available to buy or for lease.**

Contact your Binding Efficiency Expert for details.



**BONUS!** System includes additional desktop unit for editing.

### DOCUMENT SIZE

A4 — portrait bound orientation

### SYSTEM CAPACITY

From 1 to 150 sheets of 80 gsm paper.

Performance is subject to user environment.

### DOCUMENT SPINE WIDTH

from 1.5 to 15 mm

### MACHINE DIMENSIONS

L 511 x W 475 x H 360mm

### MACHINE WEIGHT

28 kg

### POWER SUPPLY

230V, 50/60Hz

**BINDOMATIC®**  
BINDING EFFICIENCY EXPERTS

[www.Bindomatic.com](http://www.Bindomatic.com)

Box 27036, SE-102 51 • Östhammarsgatan 68, SE- 115 28 • Stockholm, Sweden

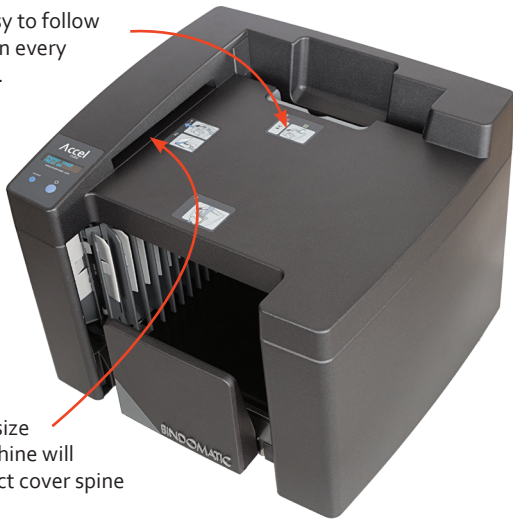
Phone: +46 8 709 58 00 • Fax: +46 8 709 58 02



# HOW DROP&GO WORKS

## A. FRONT AND RIGHT SIDE

Step-by-step, easy to follow instructions are on every Bindomatic Cube.



Once pages are placed in the automatic cover size selector, the machine will display the correct cover spine width to use.

## B. BACK AND LEFT SIDE

Insert unbound documents (up to 150 sheets) and covers into the Cube



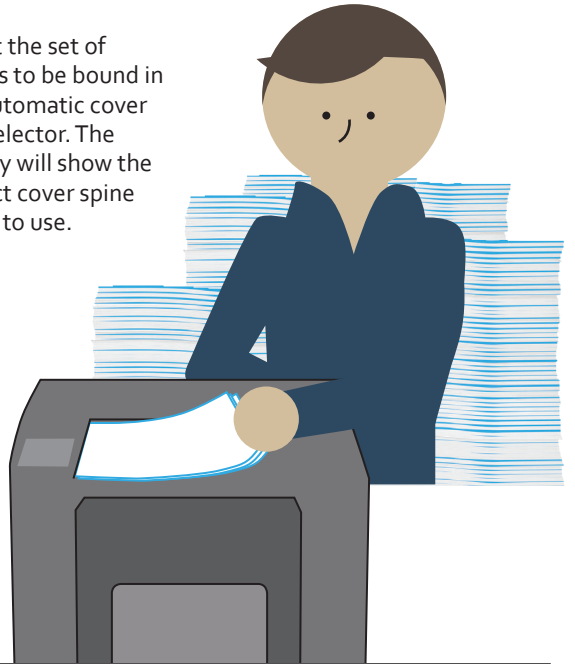
## C. FRONT AND LEFT SIDE



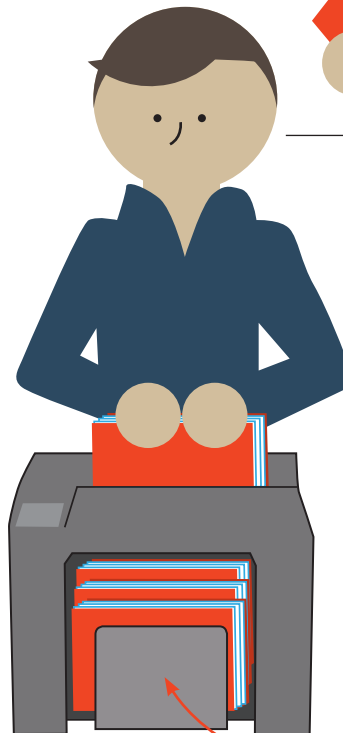
The thermal binding belt fuses your document pages and covers together in seconds, then moves the finished documents to the cooling tray.

The cooling tray expands to accommodate your documents as they emerge; bound and ready to use.

1. Insert the set of papers to be bound in the automatic cover size selector. The display will show the correct cover spine width to use.



2. Place document pages in a Bindomatic cover, with the correct spine size, and align.



3. **DROP** the ready-to-bind document when the green LED indicator light is lit.

4. **GO!** The machine will signal when the thermal binding process is complete. Remove the bound document(s) from the front tray.